



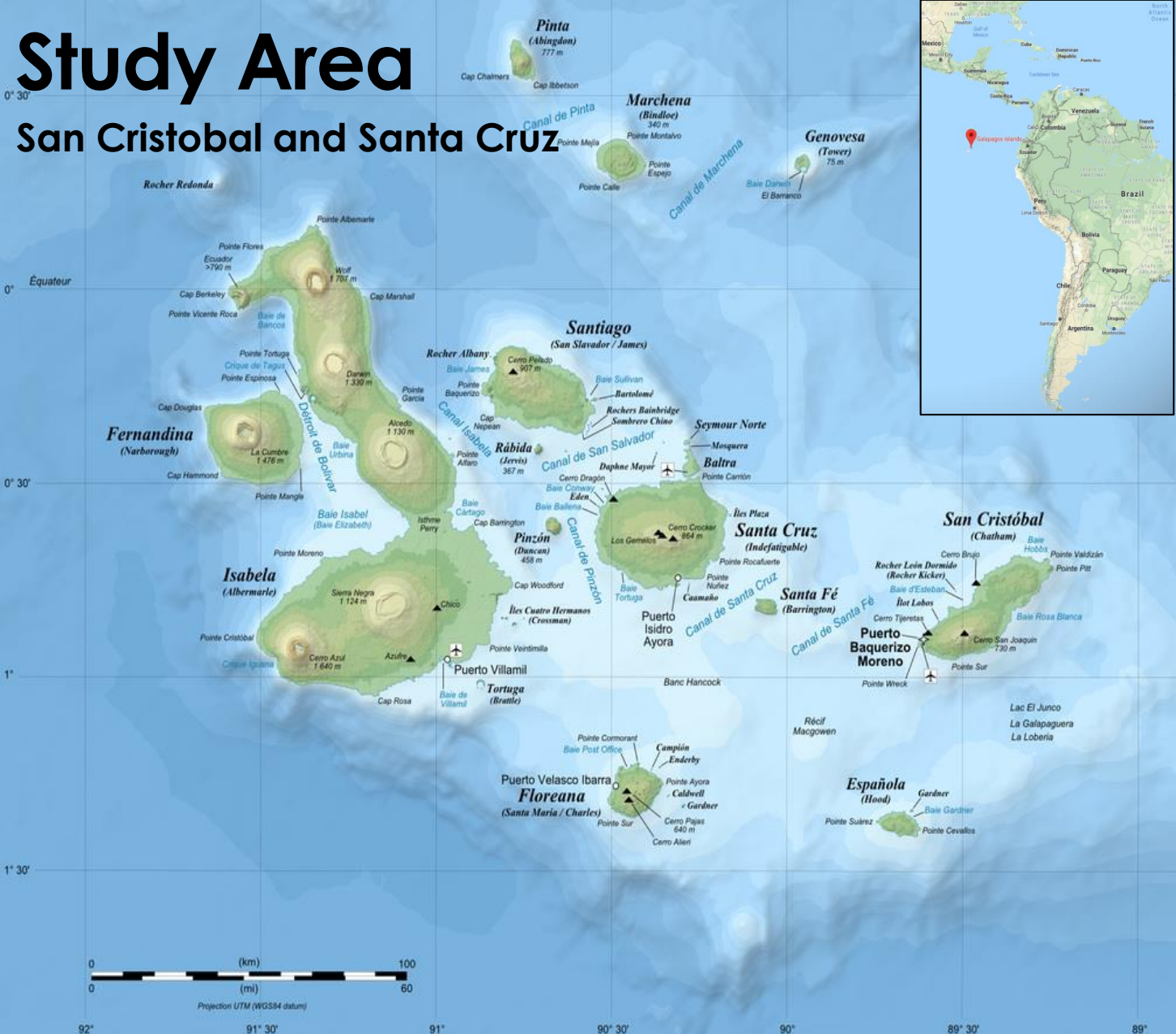
EVALUATING PERCEPTIONS OF PLASTIC BAG USE AND OPPORTUNITIES FOR CHANGE IN THE GALAPAGOS ISLANDS

Jerry Aylmer



Study Area

San Cristobal and Santa Cruz



- Population – 25,000
- Tourists – 250,000/year
- 8 million DPC-Bs / year
- 2015 attempted ban



Research questions

1) Perspectives & motivations:
Stakeholders vs population?



2) Key barriers to reduction of DPB
use?



3) Characteristics for a strategy to
be effective?



Study approach

➤ **Identified 6 key stakeholder sectors** – Usage, impact, influence

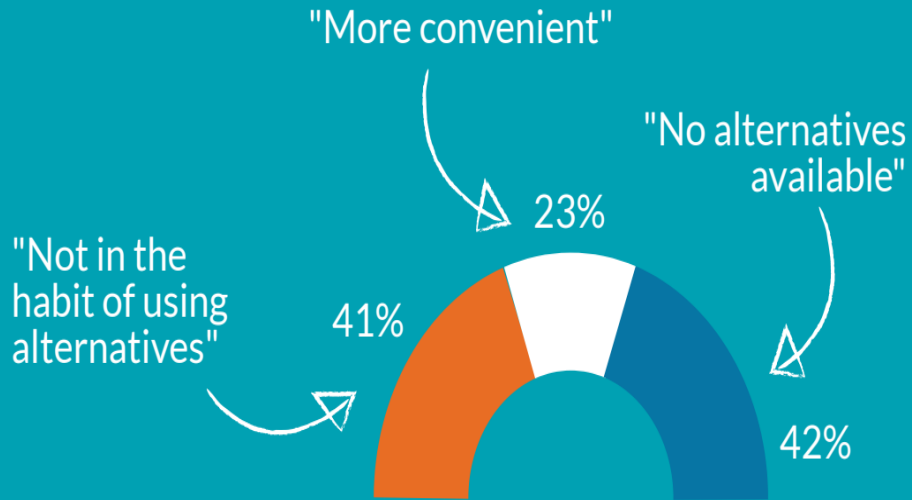
➤ **Surveys**



➤ **Lessons from around the world**

Key findings

? Why do you use plastic bags?



? What do people use plastic bags for?



"Many people here on San Cristobal incorrectly think they need to put their organic waste in plastic bags"

Key findings



Evaluation of 2015 Plastic 'T-shirt bag' ban



"It needs to be consistent and continuous, not just a month like happened in 2015"



51% of people were aware of it



Only 20% of fishers and farmers were aware



Did influence attitudes towards plastic usage

→ but 63% used other disposable plastic bags



64% agreed it was a good idea but not implemented enough



Lessons for success from policies around the world



Must be consistent and long lasting



Consult stakeholders and make appropriate for local culture



Show clear reasons and benefits

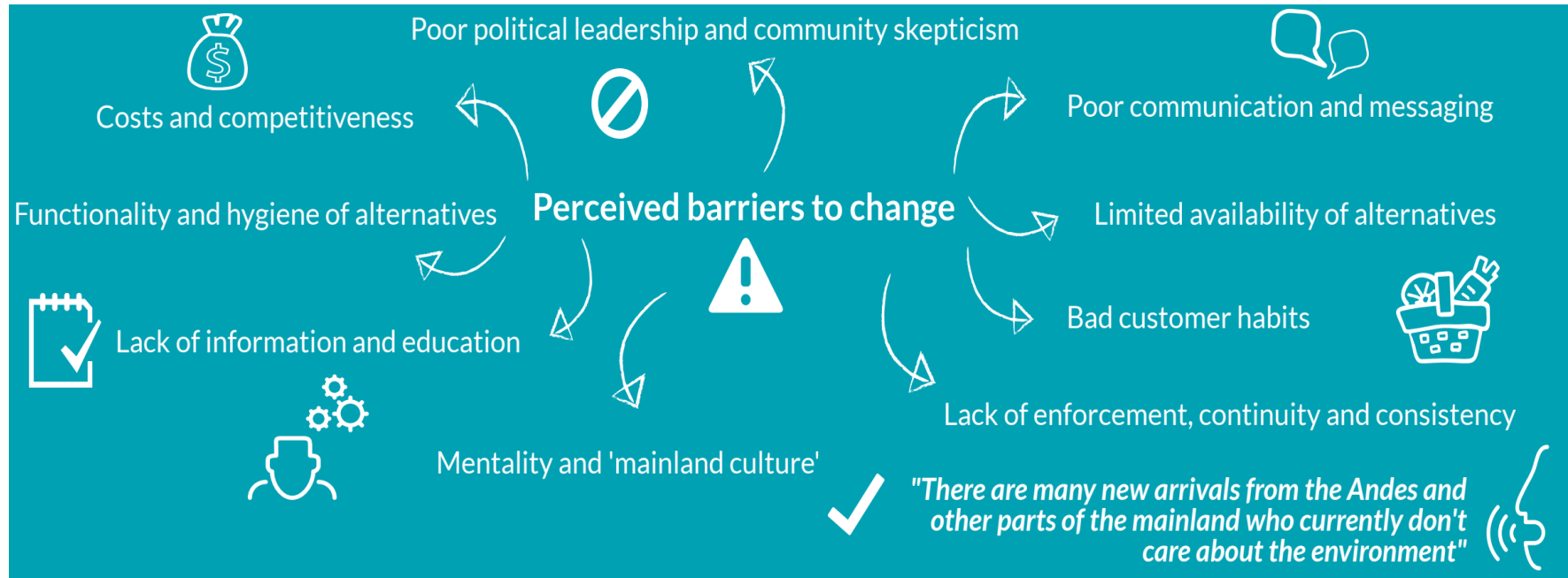


Proactive strong leadership



Key findings

➤ Most people are concerned about DPB impacts and want action



➤ Frustration at mentality of new arrivals & local political leaders

➤ Cost and availability of alternatives

➤ Implementation *"It needs to be consistent and continuous"*

Strategy recommendations

=> Interviews + Questionnaires + Lessons learned (2015 & globally)

➤ **Phased ban – Consistent, long-lasting, monitored**

Strategy recommendations

➤ **Phased ban – Consistent, long-lasting, monitored**

➤ **Awareness & education program**

➤ Focus: New arrivals & the young



Strategy recommendations

➤ **Phased ban – Consistent, long-lasting, monitored**

➤ **Awareness & education program**

➤ Focus: New arrivals & the young



➤ **3Es: Engage – Educate – Empower local community action**

Strategy recommendations

➤ **Phased ban – Consistent, long-lasting, monitored**

➤ **Awareness & education program**

➤ Focus: New arrivals & the young



➤ **3Es: Engage – Educate – Empower local community action**

➤ **Stimulate local enterprise / improve supply economics**

Strategy recommendations

➤ Phased ban – Consistent, monitored

➤ Consultation & education program



➤ 3Es: Engage – Educate – Empower local community action

➤ Alternatives supply - stimulate local enterprise

➤ Improve organic & toilet waste management

=> Political support and leadership

In summary

First evaluation of 2015 DPB initiative & of how the people view the issue and potential solutions

Beware the Mayor!

Conservation human dependent – identify the key person(s) & strings

Given study findings, such a plan has every chance of being accepted and effective



“There is the opportunity to do something in the Galapagos that can be an example to the rest of the planet”

Andy Donnelly, 2018



Jen Jones & Andy Donnelly

Thank you



Andrew Knight
Imperial College
London